



# CITY OF COLVILLE 2010 CONSUMER CONFIDENCE REPORT

The City of Colville Water Department is excited to share with you another Water Quality Report. **We're pleased to report that our drinking water is safe and meets Federal and State Requirements.**

We routinely monitor for contaminants in our drinking water according to Federal and State laws. The state allows us to monitor for some contaminants less than once per year because the concentrations of these contaminants do not change frequently. This report is a reflection of last year's report and shows the results of our monitoring for the period of January 1<sup>st</sup> to December 31<sup>st</sup>, 2010. We conducted over 100 tests for over 90 contaminants and only detected (5) contaminants (see results table). Our goal is and always will be to provide you with a safe and dependable supply of drinking water.

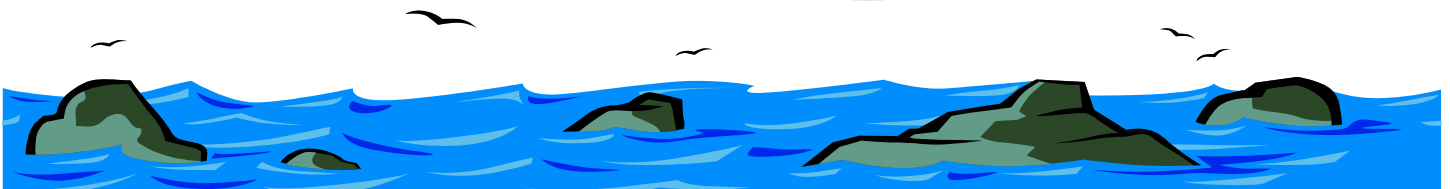
## Did You Know?

Drinking water, including bottled water, may reasonably be expected to contain at least small amounts of some contaminants. The presence of contaminants does not necessarily indicate that the water poses a health risk. More information about contaminants and potential health effects can be obtained by calling the Environmental Protection Agency's Safe Drinking Water Hotline at 1-800-426-4791.



## Inside This Newsletter:

- ◆ 2010 Water Quality Data
- ◆ Water Use Efficiency
- ◆ Colville's Drinking Water—Where Does It Come From
- ◆ Water Conservation Tips



## CONTACT INFORMATION

If you have any questions concerning this report, please contact our Municipal Services Administrator Eric Durpos or Water Specialist Joe Merrill at 509-684-2244. Would you like to be more involved in making decisions regarding our drinking water? The City of Colville holds regularly scheduled Council meetings on the second and fourth Tuesdays of every month at City Hall, located at 170 S. Oak. Council meetings start at 7:00 p.m. We are on the web! Visit us at [www.colville.wa.us](http://www.colville.wa.us).

**Landlords**—If a consumer confidence report has not been received by your tenants, please share this report, inform them of our website, or request they stop by City Hall (located at 170 S. Oak) or the Colville Water Department (located at 1044 N. Lincoln) for a copy.



## Health Information

Some people may be more susceptible to contaminants in drinking water than the general population. Immuno-compromised persons such as persons with cancer undergoing chemotherapy, persons who have undergone organ transplants, people with HIV/AIDS or other immune system disorders, some elderly, and infants can be particularly at risk from infections. These people should seek advice about drinking water from their health care providers. EPA/CDC guidelines on appropriate means to lessen the risk of infection by cryptosporidium and other microbiological contaminants are available from the EPA Safe Drinking Water Hotline (800-426-4791).

# WATER USE EFFICIENCY

## How Will The City of Colville Comply?

- Conduct a water system audit to account for all water usage.
- Re-evaluate our water supply and forecasted demands.
- Report to the Department of Health and our customers yearly through the consumer confidence report.
- Set goals for water use efficiency and continue to educate customers on ways to conserve water.
- Preserve our water rights to help ensure healthy drinking water for generations to come.

## Water Use Efficiency Rule Requirements:

- Collect data, forecast demand, evaluate leakage, evaluate rate structures that encourage water use efficiency, and evaluate/implement water use efficiency measures.
- Reduce distribution system leakage to 10% or less.
- Develop goals through a public process and enact water use efficiency measures to manage water use.
- Develop water use efficiency goals through a public process and report annually on performance.
- Install service meters, if not already installed, within 10 years to account for water use and leakage.

Growing communities, agriculture, industry, and the importance of conserving water for fish, animals, and humans have placed an increasing demand on our state's water resources. In 2003, Washington State Legislature passed the Municipal Water Supply—Efficiency Requirements Act, better known as the Municipal Water Law (MWL). This law gives municipal water suppliers certain benefits and obligations. One of the obligations we must comply with is the [Water Use Efficiency \(WUE\) Rule](#). This rule requires municipal water systems to use water efficiently and demonstrate that we are doing so.



# WATER CONSERVATION TIPS



## INDOOR WATER CONSERVATION TIPS:

- Check toilets, faucets, and pipes for leaks.
- Each flush wastes water. Don't use the toilet as a wastebasket.
- Install water-efficient shower heads/take shorter showers.
- Only wash dishes when necessary. Turn the dishwasher on only when it is full.
- Use the proper water level, load size selection, and water temperature when washing clothes. Pre-rinse clothes only when absolutely necessary.

## OUTDOOR WATER CONSERVATION TIPS:

- Check house & irrigation lines for leaks.
- Water only when needed. Frequency depends on plant and soil type. One inch of water a week, including rainfall, is all your lawn needs.
- Water root areas of your plants to establish hardiness.
- To reduce evaporation, water the lawn in the early morning or evening. Avoid watering during the heat of the day or when it is windy.
- Install a trickle or drip irrigation system for a slow, steady supply of water to the plant roots.
- If your lawn is healthy, consider letting your lawn go dormant in the summer. It will turn green again when it rains.



# INDEX FOR TEST RESULTS

Parts per million (ppm) ) - one part per million corresponds to one minute in two years or a single penny in \$10,000.

Parts per billion (ppb) - one part per billion corresponds to one minute in 2,000 years, or a single penny in \$10,000,000.

Picocuries per liter (pCi/L) - picocuries per liter is a measure of the radioactivity in water.

Nephelometric Turbidity Unit (NTU) - nephelometric turbidity unit is a measure of the clarity of water. Turbidity in excess of 5 NTU is just noticeable to the average person.

Maximum Contaminant Level - The “Maximum Allowed” (MCL) is the highest level of a contaminant that is allowed in drinking water. MCLs are set as close to the MCLGs as feasible using the best available treatment technology.

Maximum Contaminant Level Goal - The “Goal” (MCLG) is the level of a contaminant in drinking water below which there is no known or expected risk to health. MCLGs allow for a margin of safety.

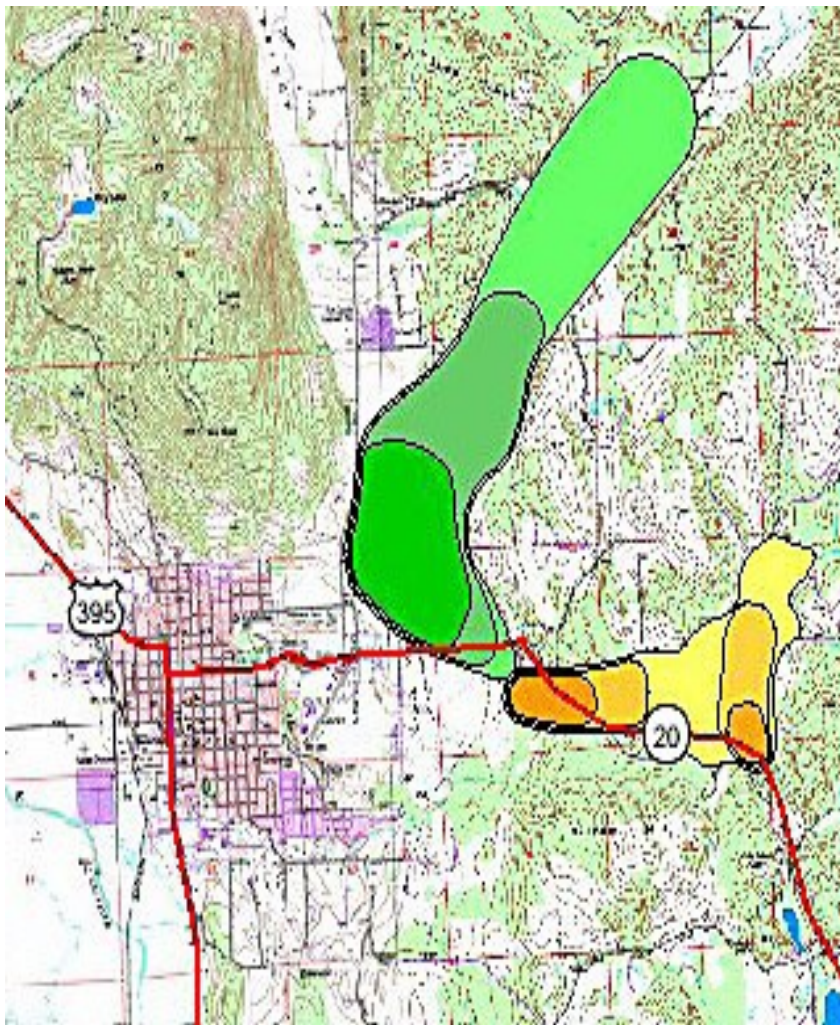
<b>TEST RESULTS—<u>UPPER SYSTEM</u></b>					
Detected Substance	Violation Y/ N	Level Detected	MCLG	MCL	Likely Source of Contamination
<b>Inorganic Contaminants</b>					
Barium	N	0.08 ppm	0.1	2	Erosion of natural deposits
Nitrate	N	0.5 ppm	0.5	10	Runoff from fertilizer use, erosion of natural deposits
<b>Volatile Organic Contaminants</b>					
Total Trihalomethanes	N	5.06 ppb	0.5	80	By-product of drinking water chlorination
<b>Microbiological Contaminants</b>					
Turbidity	N	0.5 NTU	0.1	1	Soil runoff
<b>Synthetic Organic Contaminants Including Pesticides and Herbicides</b>					
The City of Colville currently has a waiver for the testing of Synthetic Organic Contaminants. The waiver was based on the <u>upper system</u> having a <u>moderate susceptibility</u> as determined by prior testing. The waiver was renewed in 2005.					
<b>Radioactive Contaminants</b>					
Radium 228	N	1.4 pCi/l	0.6	5	Erosion of natural deposits

## TEST RESULTS—LOWER SYSTEM

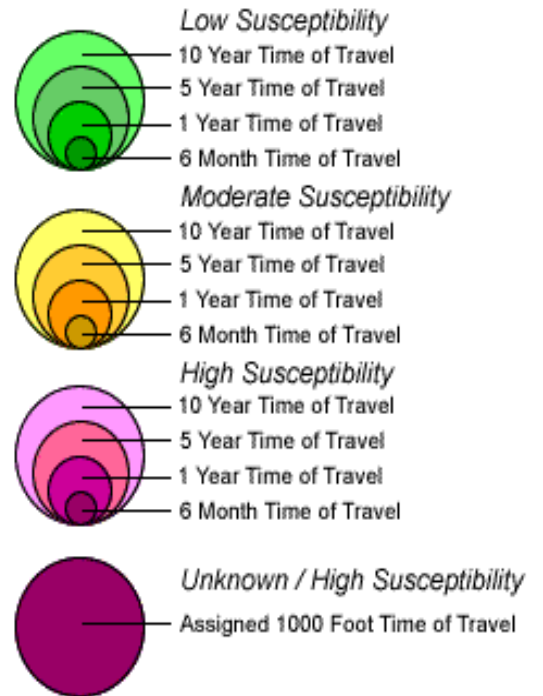
Detected Substance	Violation Y/ N	Level Detected	MCLG	MCL	Likely Source of Contamination
<b>Inorganic Contaminants</b>					
Barium	N	0.13 ppm	0.1	2	Erosion of natural deposits
<b>Volatile Organic Contaminants</b>					
Total Trihalomethanes	N	3.26 ppb	0.5	80	By-product of drinking water chlorination
<b>Microbiological Contaminants</b>					
Turbidity	N	0.4 NTU	0.1	1	Soil runoff
<b>Synthetic Organic Contaminants Including Pesticides and Herbicides</b>					
The City of Colville currently has a waiver for the testing of Synthetic Organic Contaminants. The waiver was based on the <u>lower system</u> having a <u>low susceptibility</u> as determined by prior testing. The waiver was renewed in 2005.					
<b>Radioactive Contaminants</b>					
Radium 228	N	0.40 pCi/l	0.7	5	Erosion of natural deposits

## SO WHAT DOES THIS DATA TELL ME?

As you can see by the table, our system had **no violations**. We're proud that our drinking water meets and exceeds all Federal and State requirements. We have learned through our monitoring and testing that some contaminants have been detected but are well below the level of posing any long term health risks. MCL's are set at very stringent levels. To understand the possible health effects described for many regulated contaminants, a person would have to drink 2 liters of water every day at the MCL level for a lifetime to have a one-in-a-million chance of having the described health effect. The EPA has determined that **your water is safe** at these levels. Our lower system has an abundant and widespread concentration of iron and manganese, which is a constituent of rocks and soil in the Colville area. At sufficient concentrations, iron, manganese can adversely affect the color and taste of water and leave brown or black discolorations on laundry, plumbing, fixtures, and porcelain. Iron and manganese is a secondary contaminant, which is considered a nuisance aesthetic issue. The City of Colville currently manages the iron and manganese level by flushing mains and chemically treating with polyphosphates.



### Wellhead Protection Areas



The lower system, shown in green, has a low susceptibility for contaminants.  
The upper system, shown in yellow, has a moderate susceptibility for contaminants.

## Colville's Water—Where Does It Come From?

Our water source comes from seven groundwater wells located within one large aquifer. Wells #1, #2, #3, and #6 comprise the upper system, which is located east of Highway #20 on Church Flat and Prouty Corner. This system serves the areas on the North Hill from 8<sup>th</sup> Avenue to 11<sup>th</sup> Avenue, extending to Main Street, Summit Street (East), Garden Homes Water Association. Wells #4, #5, and #7, which are located North of Highway #20 on Church Flat, comprise the lower system and serves the remaining sections of the City.

We have a source water protection plan available from our office that provides more information such as potential sources of contamination. To learn more about susceptibility, wellhead protection, and source water assessment programs (SWAP), check out [www4.doh.wa.gov/dw/swap/app/login.cfm?app=maps](http://www4.doh.wa.gov/dw/swap/app/login.cfm?app=maps).

We at the Colville Water Department appreciate the opportunity to serve our customers with safe and dependable water. We ask that all our customers help us protect our water sources, which are the heart of our community, our way of life, and our future. Thank you for allowing us to continue providing your family with clean, quality water this year.