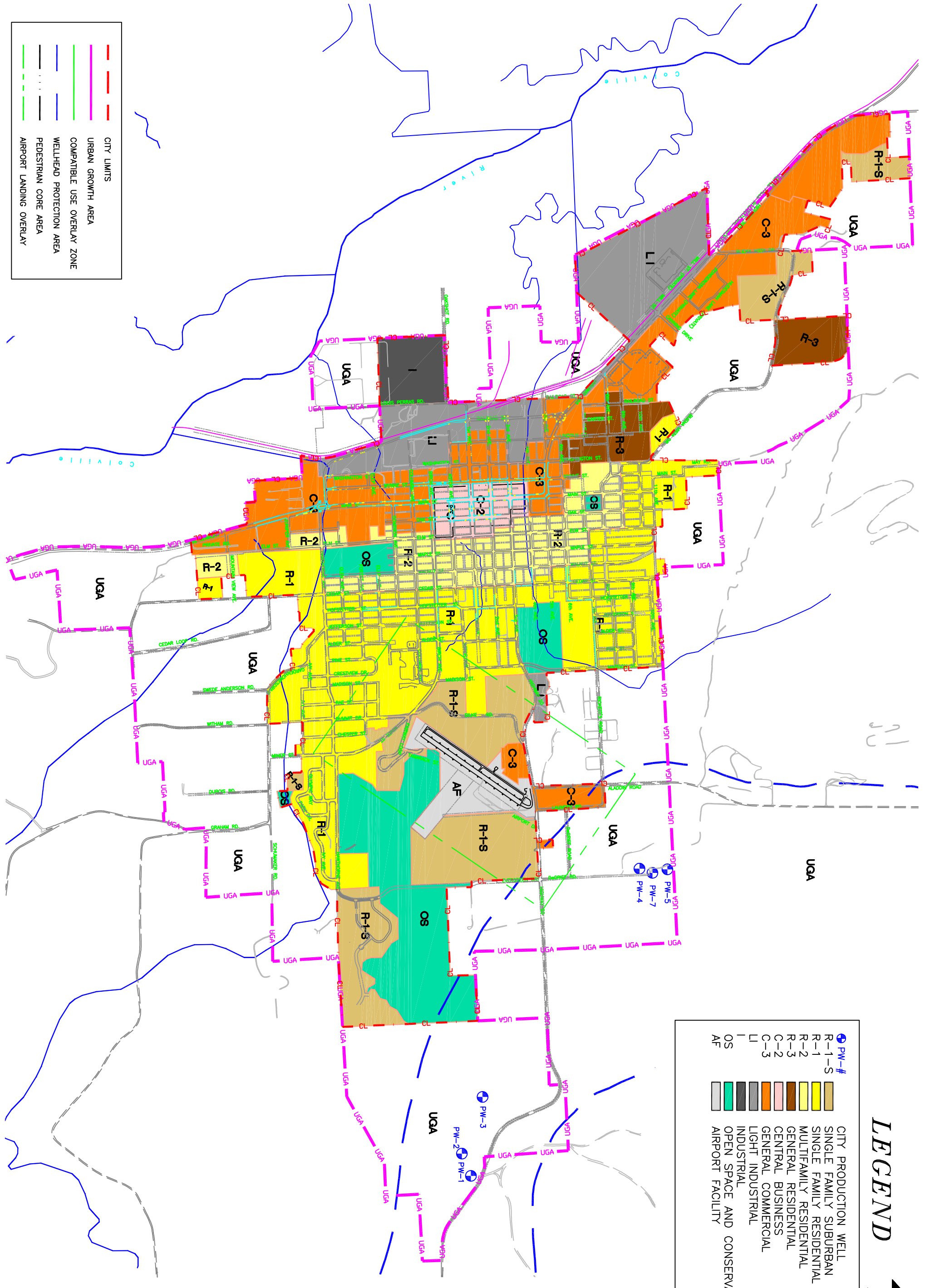


- CITY LIMITS
- URBAN GROWTH AREA
- COMPATIBLE USE OVERLAY ZONE
- WELLHEAD PROTECTION AREA
- PEDESTRIAN CORE AREA
- AIRPORT LANDING OVERLAY



- LEGEND**
- PW-#
  - R-1-S
  - R-1
  - R-2
  - R-3
  - C-3
  - C-2
  - C-1
  - LI
  - OS
  - AF
- CITY PRODUCTION WELL
  - SINGLE FAMILY SUBURBAN
  - SINGLE FAMILY RESIDENTIAL
  - MULTIFAMILY RESIDENTIAL
  - GENERAL RESIDENTIAL
  - GENERAL BUSINESS
  - GENERAL COMMERCIAL
  - LIGHT INDUSTRIAL
  - INDUSTRIAL
  - OPEN SPACE AND CONSERVATION
  - AIRPORT FACILITY



SHEET  
**1**  
OF 1

SCALE: None  
DRAWN: RLF  
DESIGN: M.FREIBERGER, PE  
CHECKED: MAF  
APPROVED: MAF  
PROJ. NO: Zoning  
DATE: Jan. 26, 2007

REVISION		
NO.	DATE	BY
1	JUN. 01, 2009	RLF

**City of Colville**  
170 S. Oak St., Colville, WA. 99114  
**Zoning Map**



PL013-000b